

# FOOD PROCESSING TRENDS & PREDICTIONS FOR TOMORROW

PMMI, The Association for Packaging and Processing Technologies, examined the latest trends impacting food processors.

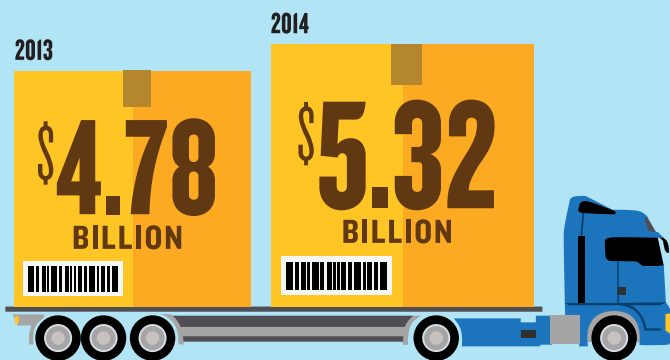
The 2017 Trends in Food Processing Operations report provides insights by consolidating intelligence from 40 industry experts. The report analyzes the market as a whole, describes consumer trends, regulatory challenges and the next generation of processing equipment.



THE Food & Beverage Processing Event  
APRIL 4-6, 2017 | CHICAGO, ILLINOIS USA

## Industry Overview

Food processing machinery continues its upswing, with the value of shipments increasing 11.3% from 2013 to 2014.



The majority of food processing establishments are small plants, but large plants represent 77% of the total value of shipments.

66% OF PLANTS

4% of Total Value of Shipments



12% OF PLANTS

77% of Total Value of Shipments

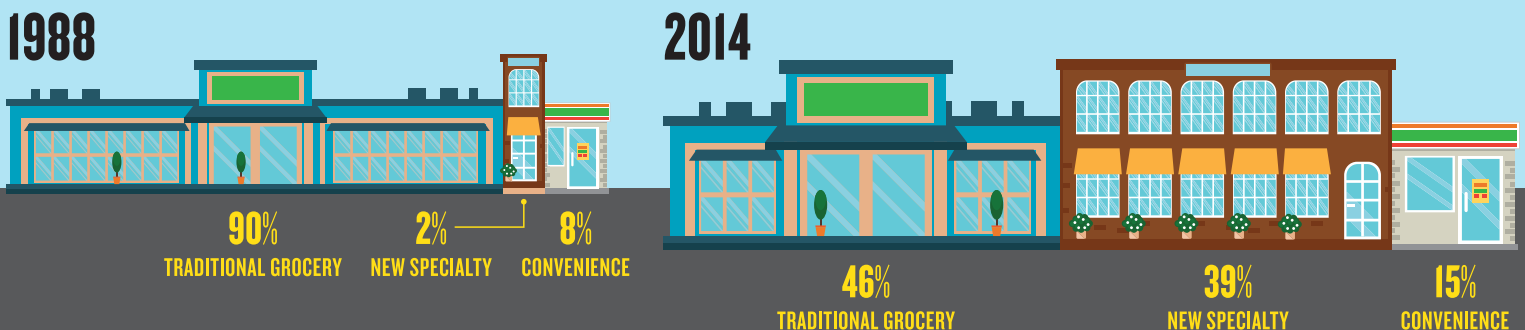


Shelf stable foods hold the largest individual market share, followed by the meat, poultry and seafood segment.

**\$731 BILLION IN 2014**  
Food and Beverage Segments Total Value of Shipments



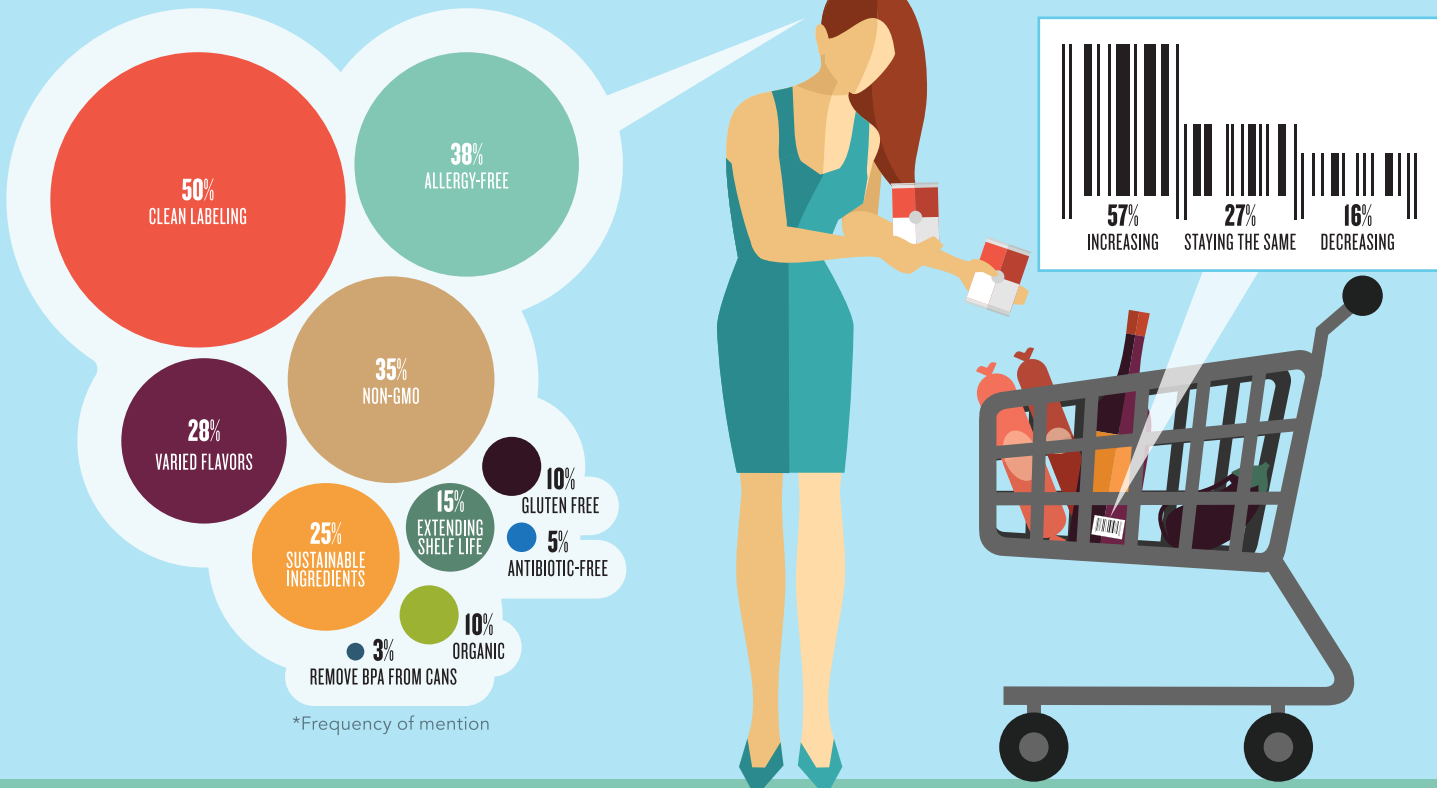
The retail landscape is shifting from the traditional grocery store to specialty and convenience stores.



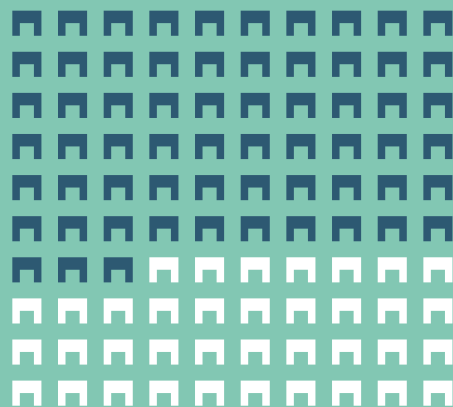
# Trends Impacting Food Processors

Consumer demand for **convenient and healthy food options** is top of mind.\*

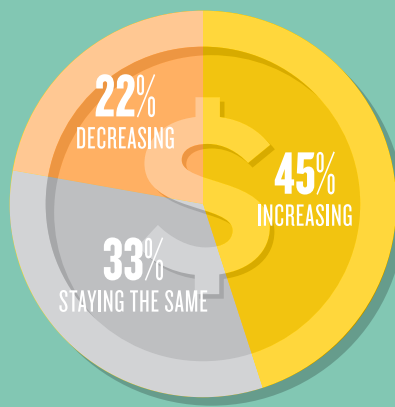
The majority of companies interviewed indicate that **SKUs will continue to increase**, driving the need for faster changeover.



# The Next Generation of Processing Equipment



63% of companies are actively exploring new processing technologies that can improve food quality, eliminate contamination and prolong shelf life.



Nearly half expect to increase spending on equipment in the next 12-24 months.



Cleanability is the desired machine improvement mentioned most often by food processors.\*

- Cleanability - 73%
- Flexible, Faster Changeover - 50%
- Improved Operator Safety - 43%
- Energy Efficiency - 25%
- Faster Processing Speeds - 20%
- Easier Serviceability - 15%

\*Frequency of mention (Exceeds 100% due to multiple answers)

Go to [pmmi.org/research](http://pmmi.org/research) to access the full 2017 Trends in Food Processing Operations report.

Food processing professionals can find the latest solutions at ProFood Tech (April 4-6, 2017; McCormick Place, Chicago).

To register, visit [profoodtech.com](http://profoodtech.com).



Powered by



THE Food & Beverage Processing Event | APRIL 4-6, 2017 | CHICAGO, ILLINOIS USA